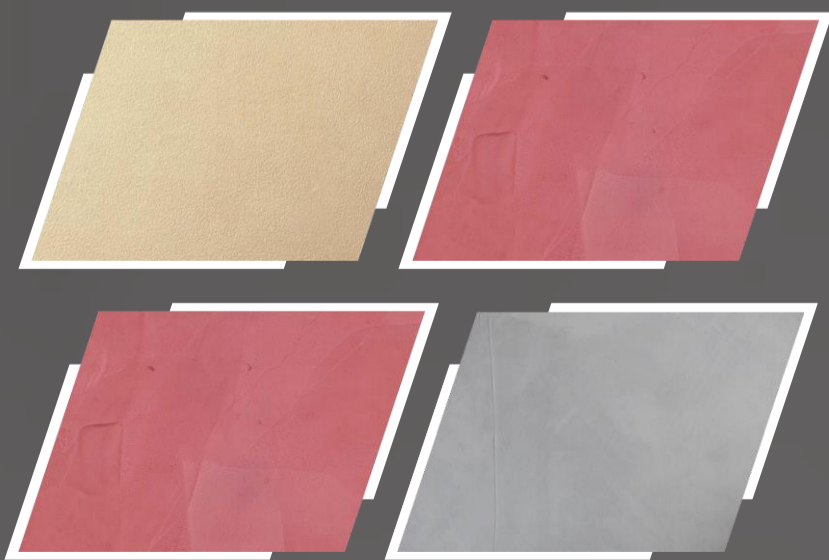




LIMEWASH

SHAPE YOUR DREAMS

- MADE FROM NATURAL LIME
- NO HARMFUL CHEMICALS



+91 7011590511,7032229090

www.concreteconcepts.co.in

GUJARAT | DELHI | HARYANA | PUNJAB | MADHYA PRADESH | UTTAR PRADESH | JHARKHAND | BIHAR | MAHARASHTRA

[concreteconcepts?](#)

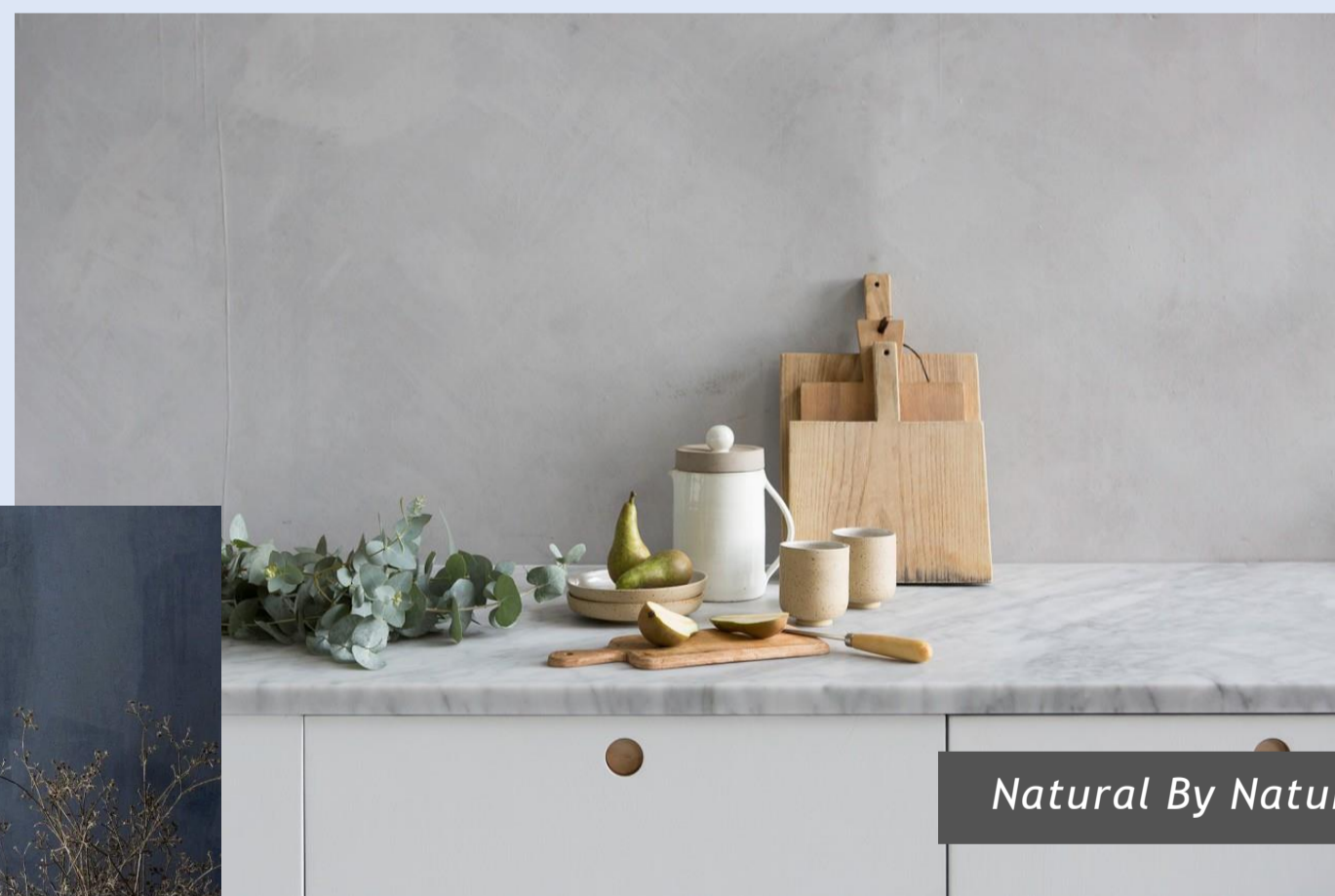
[Delhi](#)

WHAT IS LIMEWASH PLASTER ?

Breathe Life into Walls with Natural Limewash

Limewash is a very ancient paint made from limestone which has been crushed, burnt and slaked with water to make lime plaster. The lime plaster is matured for several months before being thinned with water to make limewash. Limewash is naturally white and forms a complex crystalline matrix which has a matt, slightly chalky appearance. It is coloured with pigments and can be used internally or externally where it works best on porous surfaces such as a traditional lime plaster, lime render, stone and brick. Unlike modern barrier paints, limewash works by sinking into the surface.

It hardens by absorbing carbon dioxide from the atmosphere to form crystals of calcium carbonate which give the limewash its deep matt appearance and protective qualities. When used on porous surfaces, the colour will deepen if there is any dampness in the background material, hence its attractive shading.



Natural By Nature

Limewash gives you rare and hand-crafted quality and workmanship. Never mass produced with industrial techniques, natural lime wash is not synthesized, but born of completely natural raw materials. Slaked lime, natural mineral fillers and Nature's mineral oxide pigments are used to create the unique and natural beauty of Limewash.

Hand Craft



Limewash Plaster is a premium, mineral-based wall finish made from slaked lime and natural pigments. It provides a breathable, eco-friendly, and durable matte finish with a soft, textured aesthetic. Vista Limewash Plaster isn't just a wall coating—it's a statement of elegance, sustainability, and durability. With its natural beauty, eco-friendly composition, and long-lasting performance, it outshines conventional coatings in both form and function. Perfect for creating timeless interiors and exteriors, it brings nature's artistry into your living spaces.

HOW IS OUR LIMEWASH DIFFERENT FROM OTHER COATINGS ?

Organic Elegance for Modern Spaces

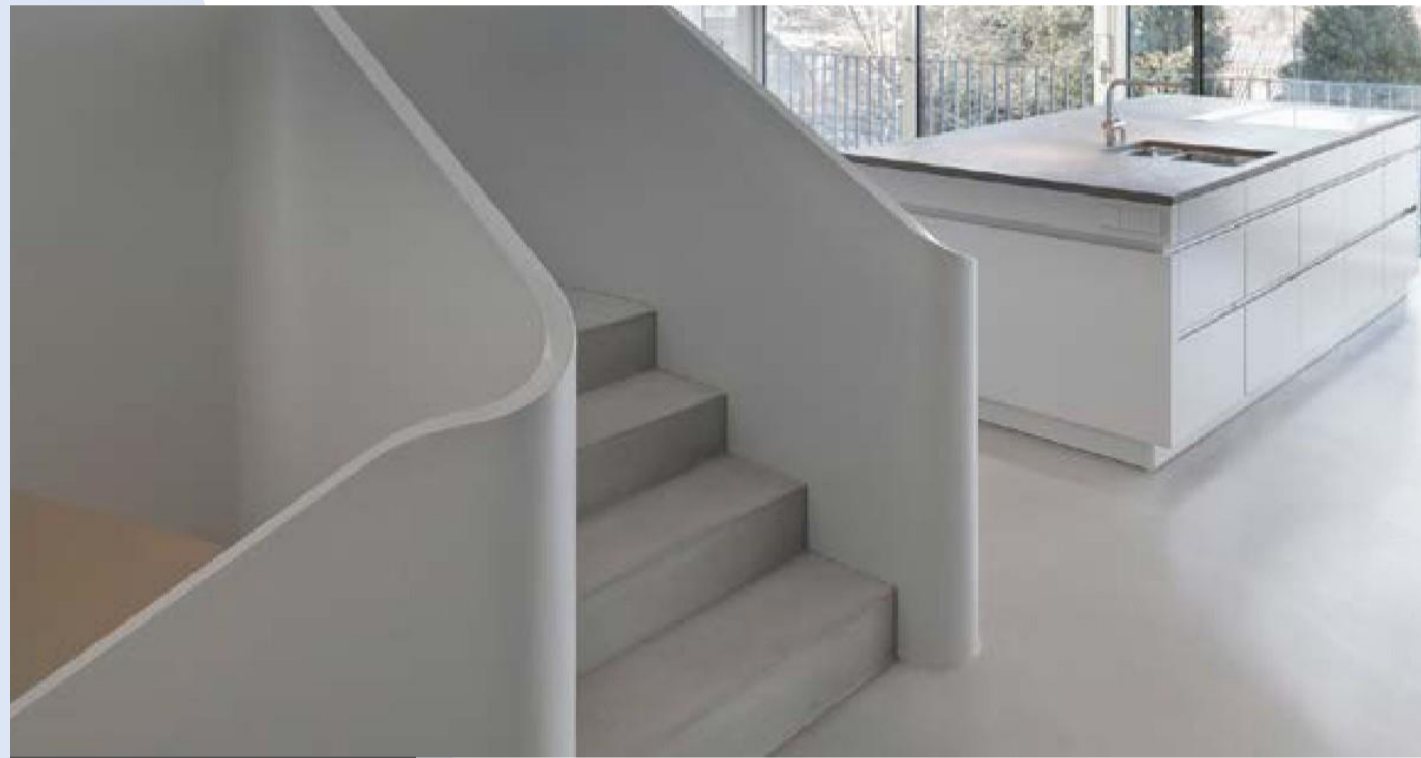
Limewash Plaster redefines wall finishes with its unique blend of tradition, sustainability, and superior performance. Unlike standard paints and synthetic coatings, it offers a natural, breathable, and timeless finish that brings authenticity to modern and classic spaces alike.

1 Natural and Eco-Friendly Composition

Limewash is crafted from slaked lime and natural pigments, free from harmful chemicals and synthetic additives. Its mineral-based formula makes it VOC compliant, ensuring a healthier indoor environment while being environmentally responsible.



Luxury Matte FINISH



Breathable

2. Breathable and Moisture-Resistant

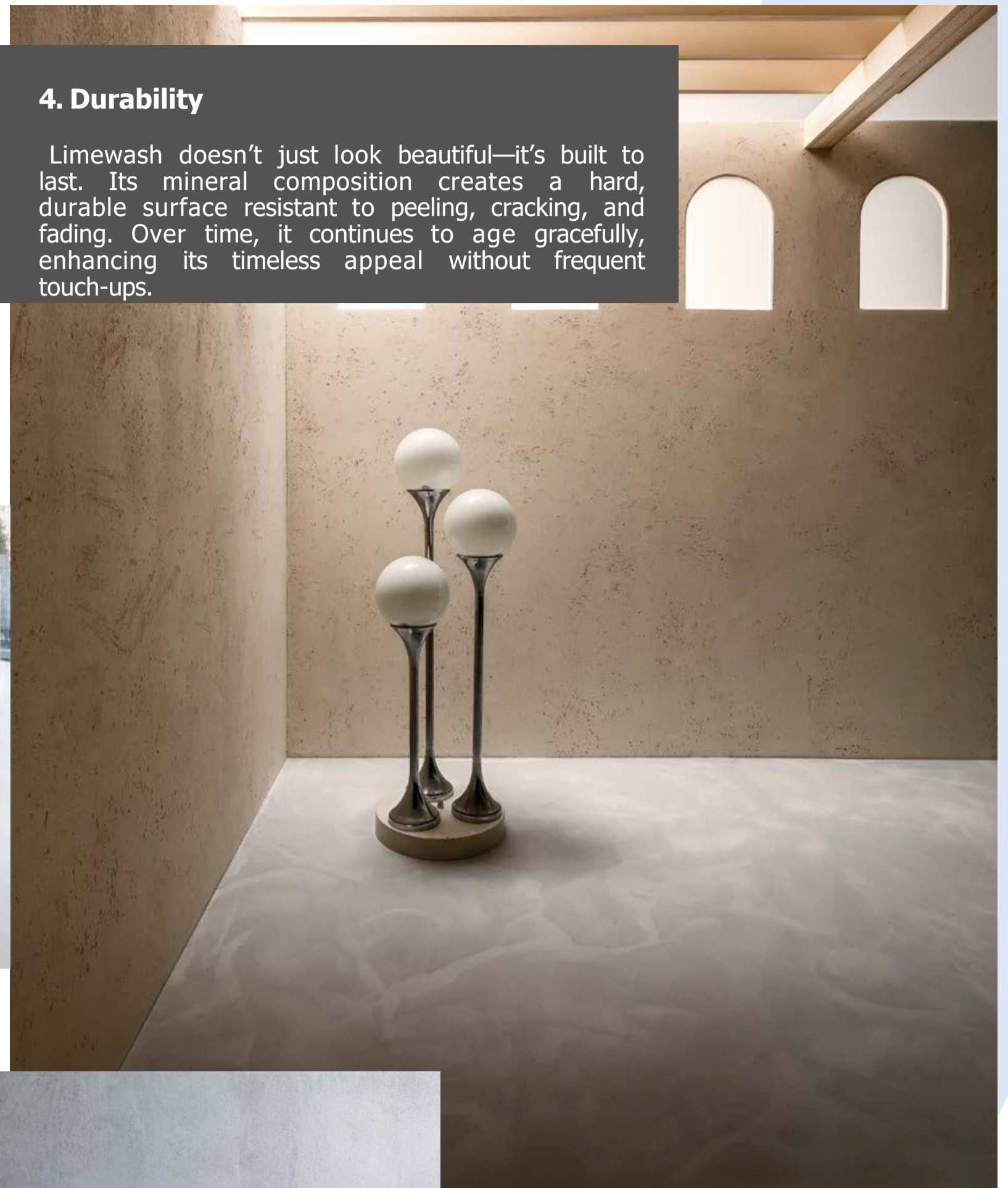
A key advantage of Vista Limewash Plaster is its exceptional breathability. It allows moisture to escape, preventing trapped humidity that often leads to mold and mildew. This property makes it ideal for damp areas like bathrooms, spas, and kitchens where air quality matters most.

3. Aesthetic Excellence with Timeless Charm

Unlike standard paints, Limewash offers a soft, matte finish with delicate tonal variations, creating a beautifully textured, organic look. Inspired by natural stone, it provides depth and character, making each wall unique. This handcrafted appearance makes it a preferred choice for both minimalist and luxurious interiors.

4. Durability

Limewash doesn't just look beautiful—it's built to last. Its mineral composition creates a hard, durable surface resistant to peeling, cracking, and fading. Over time, it continues to age gracefully, enhancing its timeless appeal without frequent touch-ups.



Cooling Temperature

5. Versatile Application

Limewash Plaster adapts to various surfaces and design styles. Whether used on interior or exterior walls, it performs exceptionally well on plaster, brick, concrete, and even previously painted surfaces. Its versatility allows for use in both residential and commercial spaces, from cozy living rooms to expansive retail showrooms.

LIMEWASH MANUFACTURING

A Heritage Finish for Contemporary Living

Concrete Concepts stands as a trusted name in the world of premium wall finishes, offering high-quality limewash solutions that blend tradition with innovation. As a leading manufacturer, we take pride in crafting limewash plaster that enhances the aesthetics of your spaces while being environmentally conscious.

Our limewash products are made from the finest natural ingredients, ensuring they are not only beautiful but also breathable and durable. With a commitment to sustainability, concrete concepts limewash plaster provides a timeless, matte finish that adds elegance to both interior and exterior surfaces.



BEST RAW MATERIAL

From all over World

At Concrete concepts Paints, we merge artistry with functionality, giving you a product that not only protects your walls but also enhances their charm. With a wide range of shades and finishes, Vista Limewash is the ultimate choice for those who value luxury and sustainability.

Proudly Made in India

PERSONALIZED GUIDANCE

Expert Limewash Solutions by a Multidisciplinary Team



At Concrete Concepts, our specialized and versatile team is dedicated to providing tailored advice to help you select the perfect limewash for your project's unique needs.

We understand that the success of any project depends significantly on choosing the right limewash or system. That's why we prioritize precise guidance, ensuring every solution aligns perfectly with your vision and requirements.

INDOORS AND OUTDOORS

A Limewash Plaster for Every Space

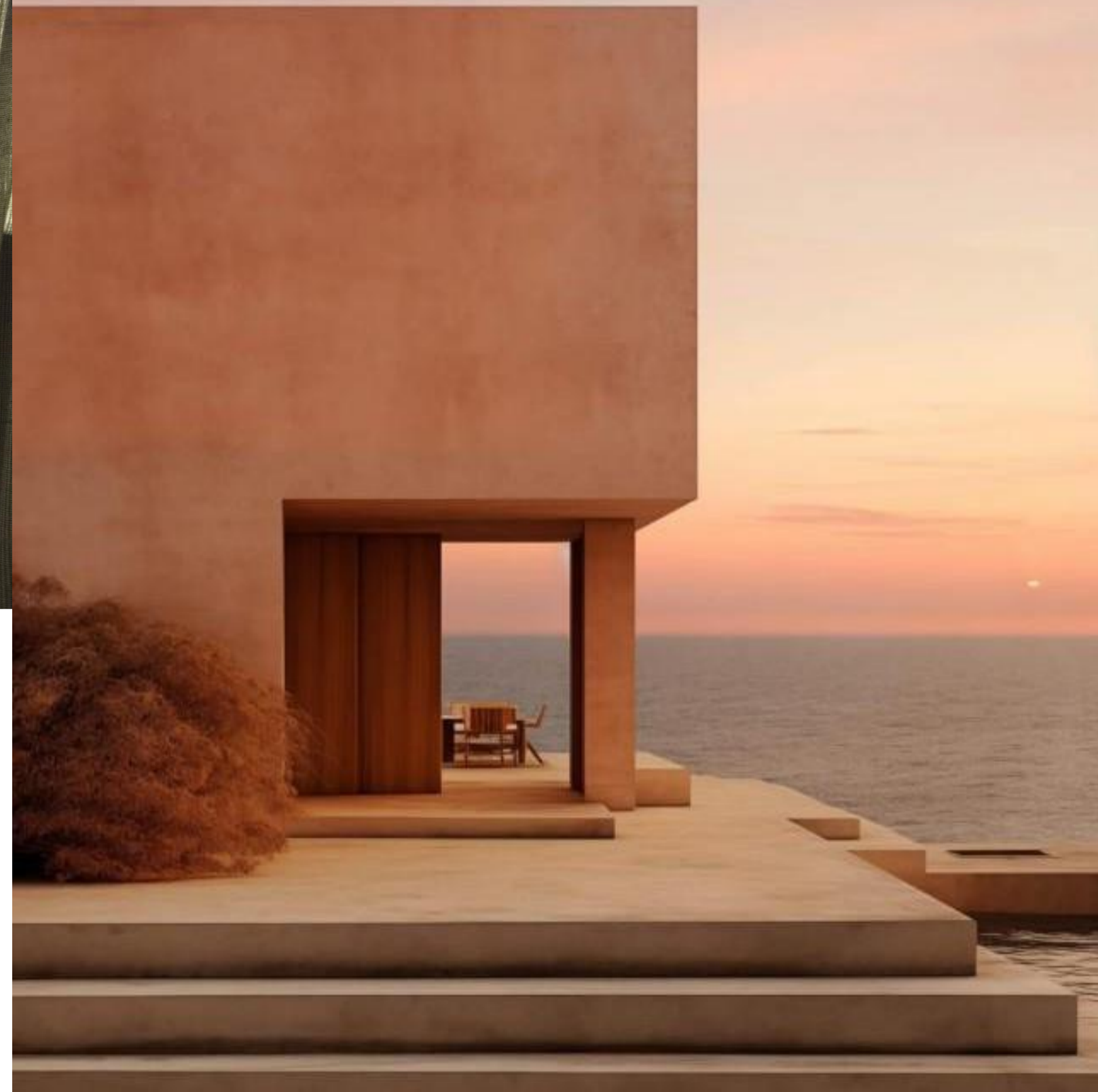
A timeless wall finish that effortlessly enhances any space—interiors, exteriors, bathrooms, kitchens, accent walls, or heritage restorations. Concrete concepts Limewash Plaster offers a specialized mineral formula tailored for various environments, ensuring optimal performance on both porous and smooth surfaces. Its breathable, mold-resistant nature makes it perfect for damp areas, while its matte, textured finish adds depth and elegance to any design.

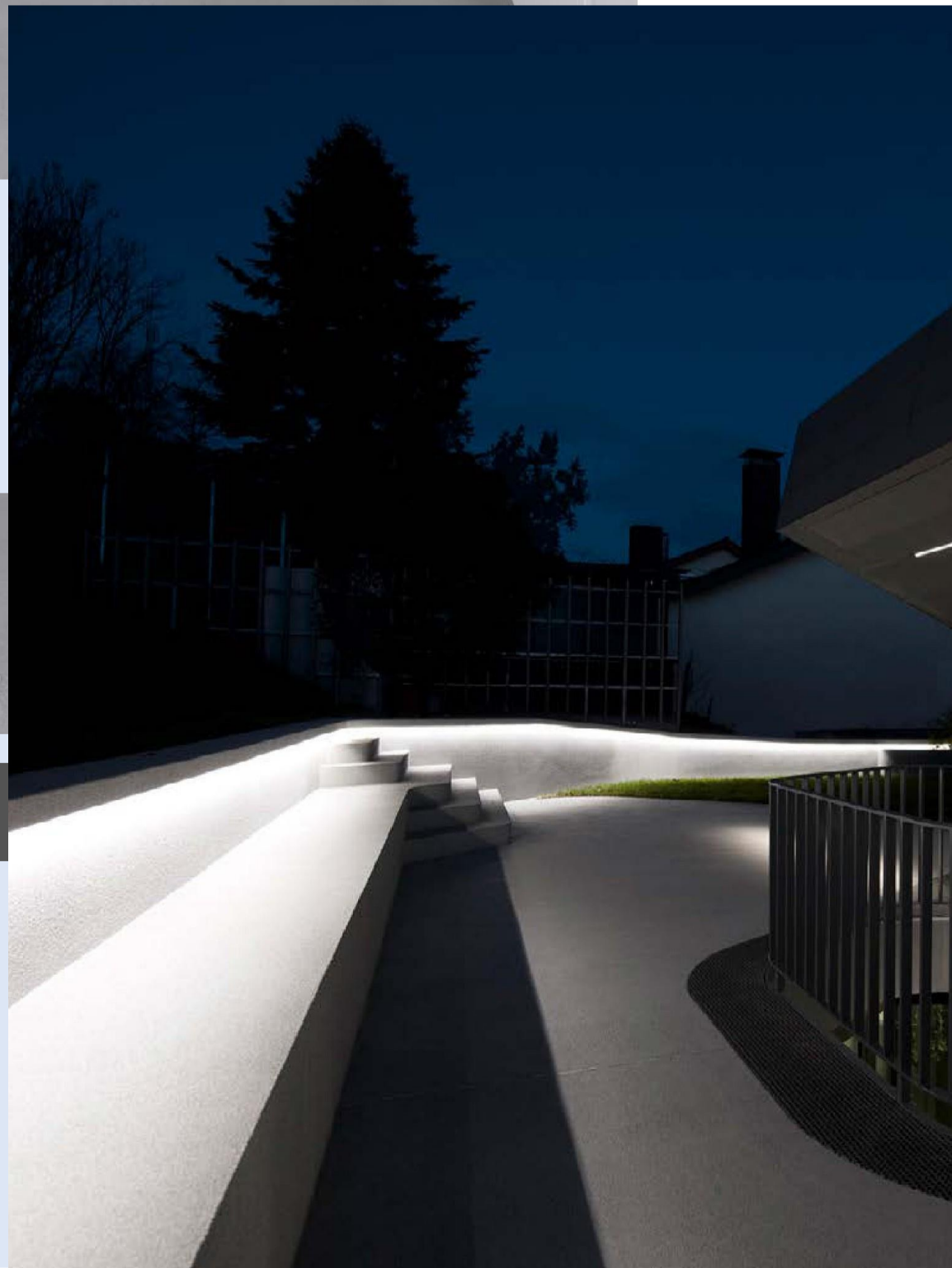
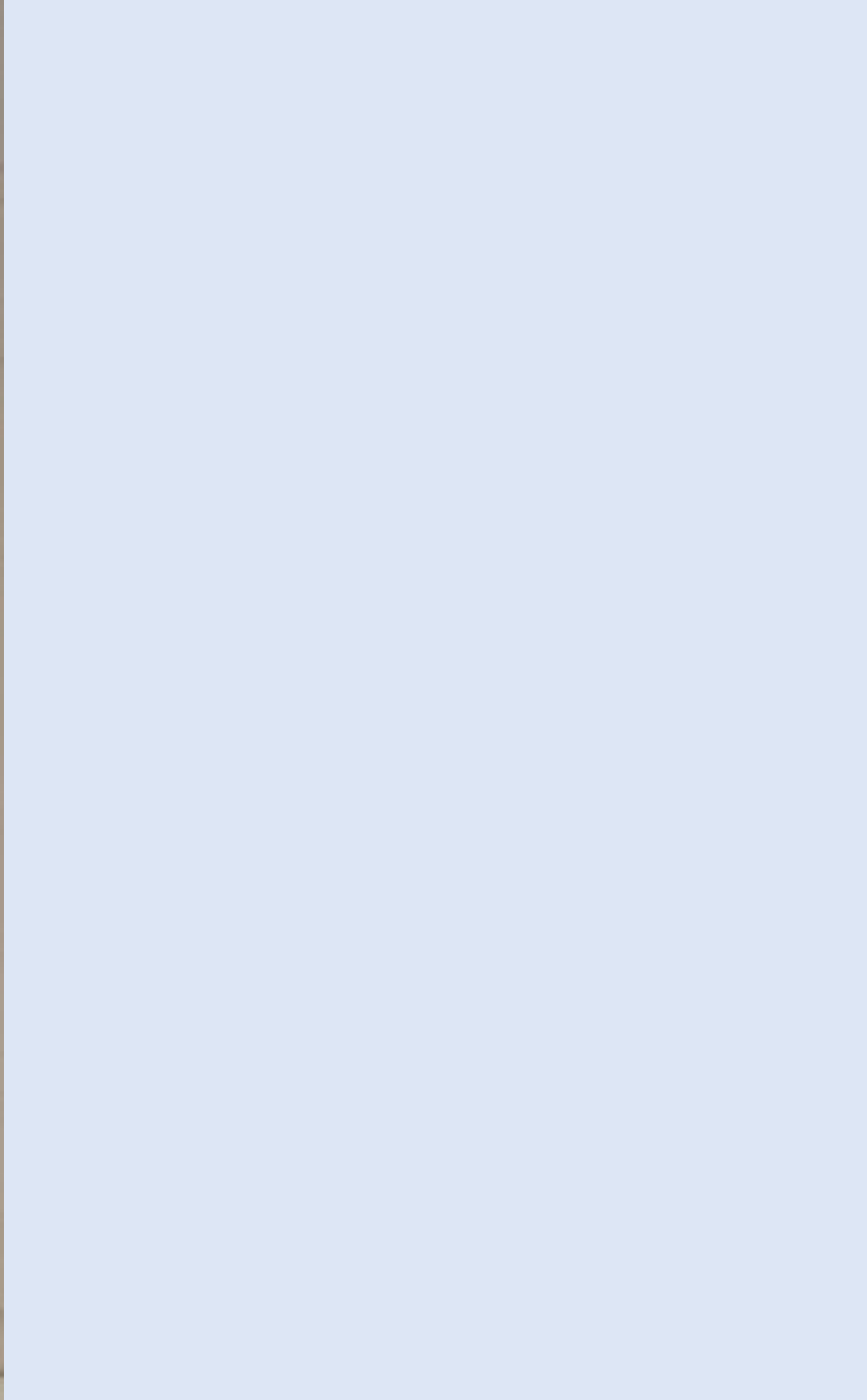


Sustainable Beauty in Every Layer



The Authentic Feel of Lime Plaster





UNMATCHED DURABILITY

Subtle Sophistication. Naturally

Concrete Concepts Limewash Plaster's exceptional mineral composition offers superior durability and resistance to natural wear, making it ideal for both residential and commercial spaces. Its breathable, flexible nature helps prevent surface cracking while resisting moisture buildup, mold, and mildew. Additionally, Vista Limewash requires minimal maintenance, is easy to clean, and maintains its natural beauty over time, ensuring lasting elegance with minimal effort.



Soft Matte Finish



Easy Cleaning and Abrasion Resistance

CREATE YOUR SPACE

Let's Shape Your Ideas with Vista Limewash

With Limewash, we bring your vision to life, crafting spaces that reflect your style and individuality. Let's transform your ideas into unique, functional works of art.



The Authentic Feel of Lime Plaster



Classic Meets Contemporary

Low Maintenance

OUR LIMEWASH COLLECTION

We have created 2 different collections Which one is yours ?

SMOOTH LIMEWASH

1. Smooth Limewash

Our Smooth Limewash comes with a luxurious smooth matte finish. It contains fine stone particles that make it a perfect lime plaster for every need. Smooth Limewash has a good amount of strokes (cloud effect) along with a soft, smooth finish.

Packing – 25Kg Bucket/Bag

2. Cork Limewash

Cork Limewash comes with a classic leather-touch, slightly rough finish — but not completely rough. It has a smooth matte appearance. The presence of small stone particles makes it a perfect lime plaster for any wall.

Cork Limewash has fewer strokes (cloud effect) and a slightly rougher finish compared to Smooth Limewash.

Packing – 25Kg Bucket/Bag

CORK LIMEWASH

TECHNICAL DATA:

Property	Value / Description
Binder	- Slaked lime (Calcium hydroxide)
Appearance	- Smooth matte finish
Color	- Natural white (custom pigments optional)
Density	- 1.3 – 1.5 g/cm ³
pH Level	- ≥12
Solids Content	- Approx. 50–55%
VOC Content	- <10 g/L (Low VOC)
Drying Time	- Touch dry: 4–6 hours
Full cure	- 7 days
Coverage	- 3–5 m ² /L per coat (depending on substrate)
Adhesion	- Good on mineral substrates
Alkalinity	- Strong – provides natural mold resistance
Permeability	- High (Breathable)
Shelf Life	- 12 months (unopened, stored in cool dry place)
Temperature	- Control temperature up to 5 to 7 degree (with some condition)
Lime portion Cont.	- 052 (High)

TECHNICAL SPECIFICATIONS

- **Coverage:** Approx. 100-150 sq. ft. per 25 kg Bag (varies with surface porosity and application).
- **Drying Time:** Touch dry in 4-6 hours; fully cured in 24-48 hours.
- **Finish:** Matte with a soft, textured look.
- **Application Tools:** Brush, Trowal (ss)
- **Dilution:** Dilute with water as needed (typically 1:1 for base coat).
- **Substrate Requirements:** Clean, dry, and porous surface for optimal adhesion.

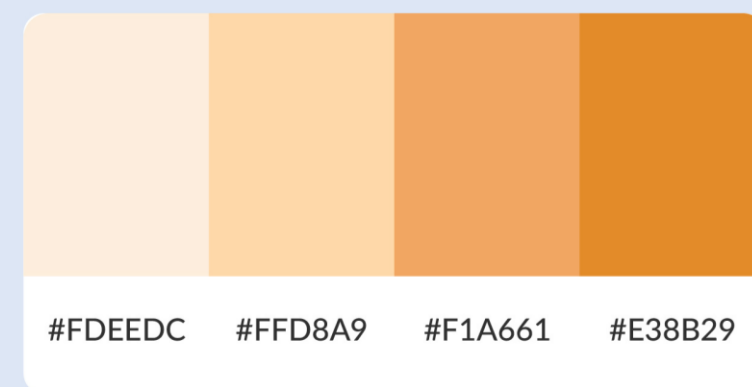
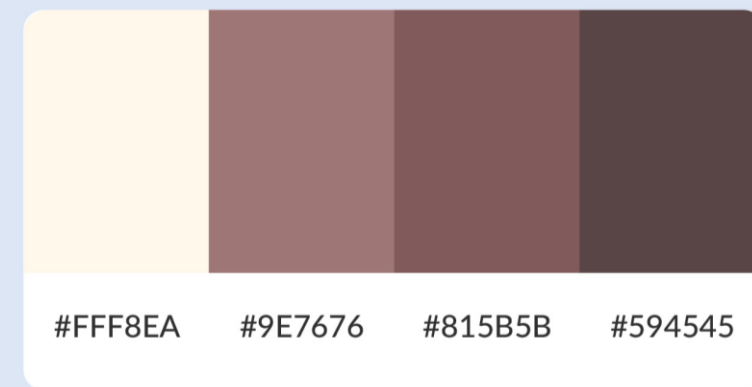
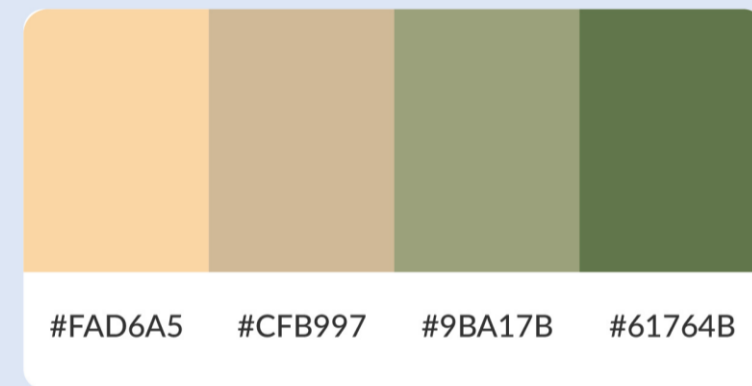
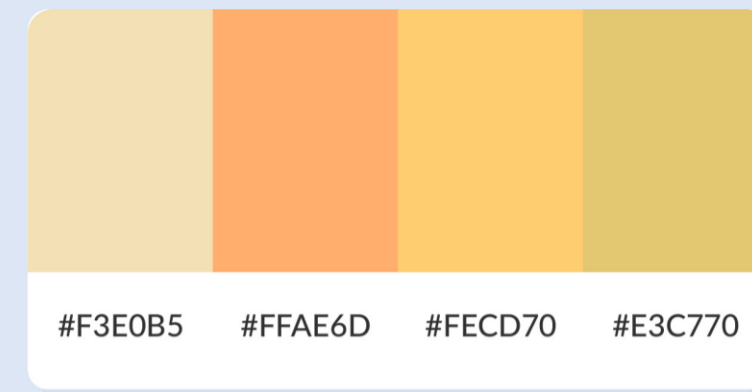


COLOR SHADES

Let Your Walls Breathe Beauty

Bring texture, warmth, and timeless charm to your walls with our stunning range of limewash color shades. From earthy tones to modern neutrals – we offer unlimited custom shades to match every design style.

Here are our Top 10 Trending Limewash Shades



*OUR CONCEPT TO GIVE YOU
SEAMLESS FINISHES*

CONCRETE CONCEPTS


Manufactured & Market

H No 503, NAGLA ROAD N.I.T FARIDABAD, HARYANA & GHITORNI DELHI

+91 7011590511, 7032229090

WWW.CONCRETECONCEPTS.CO.IN

GUJARAT | DELHI | HARYANA | PUNJAB | MADHYA PRADESH | UTTAR PRADESH | JHARKHAND | BIHAR | MAHARASHTRA

  :concreteconcepts3